

# Certificate of Analysis

QA SAMPLE - INFORMATIONAL ONLY

1 of 3

ICAL ID: 20211124-057  
Sample: CA211124-013-022  
Whole Flower Fluid  
Strain: Whole Flower Fluid  
Category: Ingestible



Batch#: 20, 100 Liters  
Primary Size:  
Batch Size:  
Collected: 11/30/2021; Received: 11/30/2021  
Completed: 11/30/2021

Moisture NT Water Activity NT	Δ9-THC <b>6.25 mg/unit</b>	CBD <b>188.59 mg/unit</b>	Total Cannabinoids <b>248.46 mg/unit</b>	Total Terpenes <b>0.970 mg/g</b>
--	-------------------------------	------------------------------	---	-------------------------------------

Summary	SOP Used	Date Tested	
Batch			Pass
Cannabinoids	POT-PREP-004	11/27/2021	Complete
Terpenes	SOP:TERP.MS.Conc	11/29/2021	Complete
Residual Solvents	RS-PREP-001	11/29/2021	Pass
Heavy Metals	HM-PREP-001	11/29/2021	Pass
Pesticides	PESTMICO-LC-PREP-001/ PEST-GC-PREP-001	11/29/2021	Pass



Scan to see results

## Cannabinoid Profile

1 Unit = bottle, 6.73 g.

Analyte	LOQ (mg/g)	LOD (mg/g)	%	mg/g	mg/unit	Analyte	LOQ (mg/g)	LOD (mg/g)	%	mg/g	mg/unit
THCa	0.0368	0.0123	ND	ND	ND	CBDV	0.0368	0.0049	0.018	0.18	1.22
Δ9-THC	0.0368	0.0053	0.093	0.93	6.25	CBN	0.0368	0.0074	<LOQ	<1	<LOQ
Δ8-THC	0.0368	0.0055	ND	ND	ND	CBGa	0.0534	0.0178	ND	ND	ND
THCV	0.0368	0.0048	ND	ND	ND	CBG	0.0368	0.0061	0.059	0.59	3.94
CBDa	0.0368	0.0059	0.646	6.46	43.46	CBC	0.0444	0.0148	0.074	0.74	5.00
CBD	0.0368	0.0050	2.802	28.02	188.59	<b>Total</b>			<b>3.692</b>	<b>36.92</b>	<b>248.46</b>

Total THC=THCa \* 0.877 + d9-THC; Total CBD = CBDa \* 0.877 + CBD. NR= Not Reported, ND= Not Detected. Potency is reported on a dry weight basis. Instrumentation and analysis SOPs used: Cannabinoids:UHPLC-DAD(POT-INST-005),Moisture:Moisture Analyzer(MOISTURE-001),Water Activity:Water Activity Meter(WA-INST-002), Foreign Material:Microscope(FOREIGN-001). Density measured at 19-24 °C, Water Activity measured at 0-90% RH. All QA submitted by the client, All CA State Compliance sampled using SAMPL-SOP-001.

## Terpene Profile

Analyte	LOQ	LOD	%	mg/g	Analyte	LOQ	LOD	%	mg/g
α-Bisabolol	0.025	0.010	0.0190	0.190	cis-Nerolidol	0.025	0.010	ND	ND
β-Myrcene	0.025	0.010	0.0190	0.190	cis-Ocimene	0.025	0.010	ND	ND
β-Caryophyllene	0.025	0.010	0.0170	0.170	δ-3-Carene	0.025	0.010	ND	ND
α-Pinene	0.025	0.010	0.0090	0.090	Eucalyptol	0.025	0.010	ND	ND
α-Humulene	0.025	0.010	0.0080	0.080	γ-Terpinene	0.025	0.010	ND	ND
Linalool	0.025	0.010	0.0070	0.070	Geraniol	0.025	0.010	ND	ND
(-)-Guaiaol	0.025	0.010	0.0070	0.070	(-)-Isopulegol	0.025	0.010	ND	ND
Caryophyllene Oxide	0.025	0.010	0.0040	0.040	p-Cymene	0.025	0.010	ND	ND
δ-Limonene	0.025	0.010	0.0040	0.040	Terpinolene	0.025	0.010	<LOQ	<LOQ
β-Pinene	0.025	0.010	0.0030	0.030	trans-Nerolidol	0.025	0.010	ND	ND
α-Terpinene	0.025	0.010	ND	ND	trans-Ocimene	0.025	0.010	ND	ND
Camphene	0.025	0.010	ND	ND	<b>Total</b>			<b>0.0970</b>	<b>0.970</b>

NR= Not Reported (no analysis was performed), ND= Not Detected (the concentration is less than the Limit of Detection (LOD)). Analytical instrumentation used: HS-GC-MS; samples analyzed according to SOP TERP-INST-003.



Infinite Chemical Analysis Labs  
8380 Miramar Mall #102  
San Diego, CA  
(858) 623-2740  
www.infiniteCAL.com  
Lic# C8-000019-LIC

*Josh M Swider*

Josh Swider  
Lab Director, Managing Partner  
11/30/2021

Confident Cannabis  
All Rights Reserved  
support@confidentcannabis.com  
(866) 506-5866  
www.confidentcannabis.com



This product has been tested by Infinite Chemical Analysis, LLC using valid testing methodologies and a quality system as required by state law. All LQC samples were performed and met the prescribed acceptance criteria in 16 CCR section 15730, pursuant to 16 CCR section 15726(e)(13). Values reported relate only to the product tested. Infinite Chemical Analysis, LLC makes no claims as to the efficacy, safety or other risks associated with any detected or non-detected levels of any compounds reported herein. This Certificate shall not be reproduced except in full, without the written approval of Infinite Chemical Analysis, LLC.



# Certificate of Analysis

QA SAMPLE - INFORMATIONAL ONLY

2 of 3

ICAL ID: 20211124-057  
Sample: CA211124-013-022  
Whole Flower Fluid  
Strain: Whole Flower Fluid  
Category: Ingestible



Batch#: 20, 100 Liters  
Primary Size:  
Batch Size:  
Collected: 11/30/2021; Received: 11/30/2021  
Completed: 11/30/2021

## Residual Solvent Analysis

Category 1	LOQ	LOD	Limit	Status	Category 2	LOQ	LOD	Limit	Status	Category 2	LOQ	LOD	Limit	Status			
	µg/g	µg/g	µg/g	µg/g		µg/g	µg/g	µg/g	µg/g		µg/g	µg/g	µg/g	µg/g			
1,2-Dichloro-Ethane	ND	1	0.5	1	Pass	Acetone	ND	300	200	5000	Pass	n-Hexane	ND	35	20	290	Pass
Benzene	ND	1	0.5	1	Pass	Acetonitrile	ND	150	100	410	Pass	Isopropanol	ND	300	200	5000	Pass
Chloroform	ND	1	0.5	1	Pass	Butane	ND	300	200	5000	Pass	Methanol	ND	300	200	3000	Pass
Ethylene Oxide	ND	1	0.5	1	Pass	Ethanol	ND	300	200	5000	Pass	Pentane	ND	300	200	5000	Pass
Methylene-Chloride	ND	1	0.5	1	Pass	Ethyl-Acetate	ND	300	200	5000	Pass	Propane	ND	300	200	5000	Pass
Trichloroethene	ND	1	0.5	1	Pass	Ethyl-Ether	ND	300	200	5000	Pass	Toluene	ND	150	100	890	Pass
						Heptane	ND	300	200	5000	Pass	Xylenes	ND	150	100	2170	Pass

NR= Not Reported (no analysis was performed), ND= Not Detected (the concentration is less than the Limit of Detection (LOD)). Analytical instrumentation used: HS-GC-MS; samples analyzed according to SOP RS-INST-003.

## Heavy Metal Screening

	LOQ	LOD	Limit	Status	
	µg/g	µg/g	µg/g	µg/g	
Arsenic	ND	0.009	0.003	0.2	Pass
Cadmium	ND	0.002	0.001	0.2	Pass
Lead	<LOQ	0.004	0.001	0.5	Pass
Mercury	ND	0.014	0.005	0.1	Pass

NR= Not Reported (no analysis was performed), ND= Not Detected (the concentration is less than the Limit of Detection (LOD)). Analytical instrumentation used: ICP-MS; samples analyzed according to SOP HM-INST-003.

## Microbiological Screening

Limit	Result	Status
-------	--------	--------

ND=Not Detected. Analytical instrumentation used:qPCR; samples analyzed according to SOP MICRO-INST-001.



Infinite Chemical Analysis Labs  
8380 Miramar Mall #102  
San Diego, CA  
(858) 623-2740  
www.infiniteCAL.com  
Lic# C8-0000019-LIC

*Josh M Swider*

Josh Swider  
Lab Director, Managing Partner  
11/30/2021

Confident Cannabis  
All Rights Reserved  
support@confidentcannabis.com  
(866) 506-5866  
www.confidentcannabis.com



This product has been tested by Infinite Chemical Analysis, LLC using valid testing methodologies and a quality system as required by state law. All LQC samples were performed and met the prescribed acceptance criteria in 16 CCR section 15730, pursuant to 16 CCR section 15726(e)(13). Values reported relate only to the product tested. Infinite Chemical Analysis, LLC makes no claims as to the efficacy, safety or other risks associated with any detected or non-detected levels of any compounds reported herein. This Certificate shall not be reproduced except in full, without the written approval of Infinite Chemical Analysis, LLC.



# Certificate of Analysis

QA SAMPLE - INFORMATIONAL ONLY

3 of 3

ICAL ID: 20211124-057  
Sample: CA211124-013-022  
Whole Flower Fluid  
Strain: Whole Flower Fluid  
Category: Ingestible



Batch#: 20, 100 Liters  
Primary Size:  
Batch Size:  
Collected: 11/30/2021; Received: 11/30/2021  
Completed: 11/30/2021

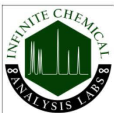
## Chemical Residue Screening

Category 1	LOQ	LOD	Status	Mycotoxins	LOQ	LOD	Limit	Status
	µg/g	µg/g	µg/g					
Aldicarb	ND	0.030	0.009	Pass				
Carbofuran	ND	0.030	0.002	Pass				
Chlordane	ND	0.075	0.025	Pass				
Chlorfenapyr	ND	0.075	0.025	Pass				
Chlorpyrifos	ND	0.030	0.008	Pass				
Coumaphos	ND	0.030	0.005	Pass				
Daminozide	ND	0.033	0.011	Pass				
Dichlorvos	ND	0.030	0.007	Pass				
Dimethoate	ND	0.030	0.007	Pass				
Ethoprophos	ND	0.030	0.004	Pass				
Etofenprox	ND	0.030	0.006	Pass				
Fenoxycarb	ND	0.030	0.006	Pass				
Fipronil	ND	0.030	0.008	Pass				
Imazalil	ND	0.030	0.009	Pass				
Methiocarb	ND	0.030	0.005	Pass				
Mevinphos	ND	0.032	0.011	Pass				
Paclbutrazol	ND	0.030	0.006	Pass				
Parathion Methyl	ND	0.024	0.008	Pass				
Propoxur	ND	0.030	0.005	Pass				
Spiroxamine	ND	0.030	0.003	Pass				
Thiacloprid	ND	0.030	0.002	Pass				

Category 2	LOQ	LOD	Limit	Status	Category 2	LOQ	LOD	Limit	Status		
	µg/g	µg/g	µg/g	µg/g		µg/g	µg/g	µg/g	µg/g		
Abamectin	ND	0.039	0.013	0.3	Pass	Kresoxim Methyl	ND	0.030	0.007	1	Pass
Acephate	ND	0.063	0.021	5	Pass	Malathion	ND	0.030	0.005	5	Pass
Acequinocyl	ND	0.035	0.011	4	Pass	Metalaxyl	ND	0.030	0.003	15	Pass
Acetamiprid	ND	0.030	0.006	5	Pass	Methomyl	ND	0.030	0.006	0.1	Pass
Azoxystrobin	ND	0.030	0.003	40	Pass	Myclobutanil	ND	0.030	0.007	9	Pass
Bifenazate	ND	0.030	0.005	5	Pass	Naled	ND	0.030	0.005	0.5	Pass
Bifenthrin	ND	0.030	0.006	0.5	Pass	Oxamyl	ND	0.030	0.009	0.3	Pass
Boscalid	ND	0.030	0.007	10	Pass	Pentachloronitrobenzene	ND	0.054	0.018	0.2	Pass
Captan	ND	0.358	0.120	5	Pass	Permethrin	ND	0.030	0.002	20	Pass
Carbaryl	ND	0.030	0.004	0.5	Pass	Phosmet	ND	0.030	0.005	0.2	Pass
Chlorantraniliprole	ND	0.030	0.006	40	Pass	Piperonyl Butoxide	ND	0.030	0.006	8	Pass
Clofentezine	ND	0.030	0.005	0.5	Pass	Prallethrin	ND	0.055	0.018	0.4	Pass
Cyfluthrin	ND	0.056	0.019	1	Pass	Propiconazole	ND	0.037	0.012	20	Pass
Cypermethrin	ND	0.044	0.015	1	Pass	Pyrethrins	ND	0.030	0.002	1	Pass
Diazinon	ND	0.030	0.009	0.2	Pass	Pyridaben	ND	0.030	0.005	3	Pass
Dimethomorph	ND	0.030	0.009	20	Pass	Spinetoram	ND	0.030	0.003	3	Pass
Etoxazole	ND	0.030	0.003	1.5	Pass	Spinosad	ND	0.030	0.003	3	Pass
Fenhexamid	ND	0.030	0.008	10	Pass	Spiromesifen	ND	0.030	0.005	12	Pass
Fenpyroximate	ND	0.030	0.005	2	Pass	Spirotetramat	ND	0.030	0.006	13	Pass
Flonicamid	ND	0.046	0.015	2	Pass	Tebuconazole	ND	0.030	0.009	2	Pass
Fludioxonil	ND	0.048	0.016	30	Pass	Thiamethoxam	ND	0.030	0.006	4.5	Pass
Hexythiazox	ND	0.031	0.010	2	Pass	Trifloxystrobin	ND	0.030	0.002	30	Pass
Imidacloprid	ND	0.030	0.009	3	Pass						

### Other Analyte(s):

NR= Not Reported (no analysis was performed), ND= Not Detected (the concentration is less than the Limit of Detection (LOD)). Analytical instrumentation used: LC-MS-MS & GC-MS-MS; samples analyzed according to SOPs PESTMYCO-LC-INST-004 and PEST-GC-INST-003.



Infinite Chemical Analysis Labs  
8380 Miramar Mall #102  
San Diego, CA  
(858) 623-2740  
www.infiniteCAL.com  
Lic# C8-000019-LIC

*Josh M Swider*

Josh Swider  
Lab Director, Managing Partner  
11/30/2021

Confident Cannabis  
All Rights Reserved  
support@confidentcannabis.com  
(866) 506-5866  
www.confidentcannabis.com



This product has been tested by Infinite Chemical Analysis, LLC using valid testing methodologies and a quality system as required by state law. All LQC samples were performed and met the prescribed acceptance criteria in 16 CCR section 15730, pursuant to 16 CCR section 15726(e)(13). Values reported relate only to the product tested. Infinite Chemical Analysis, LLC makes no claims as to the efficacy, safety or other risks associated with any detected or non-detected levels of any compounds reported herein. This Certificate shall not be reproduced except in full, without the written approval of Infinite Chemical Analysis, LLC.